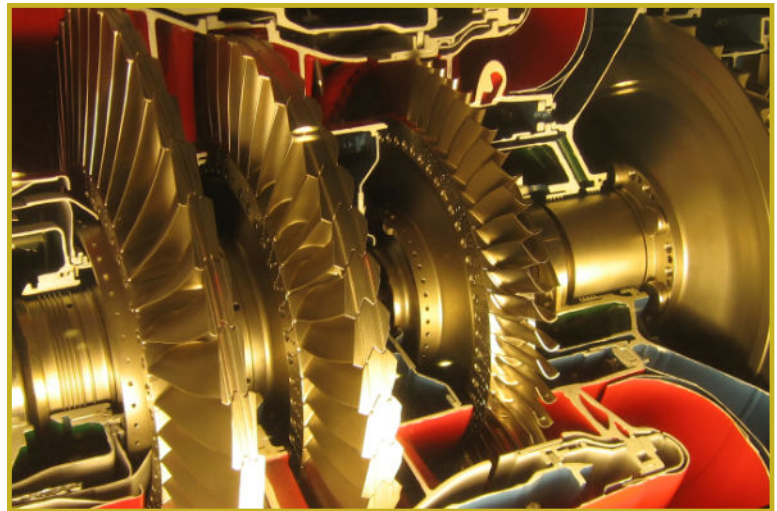


Now you can find the hidden Costs *before* you make the part.

With DFMPro, you can easily identify costly manufacturing operations.

DFMPro is an easy-to-use Design for Manufacturability (DFM) tool for designers, cost estimators, and manufacturing engineers.

By utilizing this revolutionary software in conjunction with Micro Estimating's Feature Recognition Estimating, you will significantly enhance accurate costing and production planning.



What it does

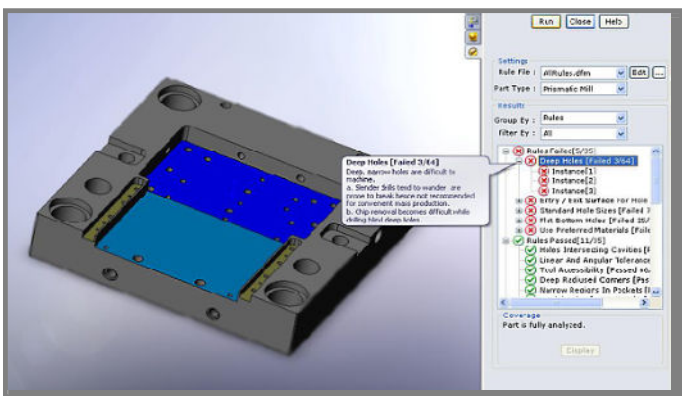


DFMPro facilitates manufacturability validation and identification of areas of a design that are difficult, expensive, or impossible to manufacture. It also will identify errors in drawings prior to manufacturing.

DFMPro performs common manufacturability checks related to machining (milling, turning, sheet metal fabrication, manufacturing tolerance and part attributes). It provides reasons and suggestions on manufacturability issues; the software is pre-populated with common manufacturing rules that can be user configured. DFMPro generates complete analysis reports, including images of the difficult and costly operations.

DFMPro comes ready to use and is economically priced. The return on investment could be immediate based on just one item, where DFMPro identified cost savings and the recommendations are implemented.

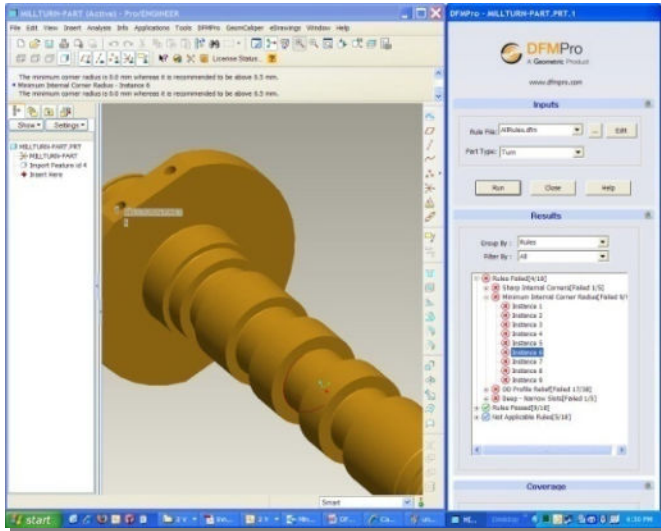
Easily Identify Costly Operations



On this part, DFMPro easily identified the costly operations and highlighted problem features with red "X's". In addition, common sense manufacturing rules are suggested for cost reductions and quality improvement.

This part has over a 100 machining operations. DFMPro utilizing its machining rules knowledge base found problem areas in just seconds.

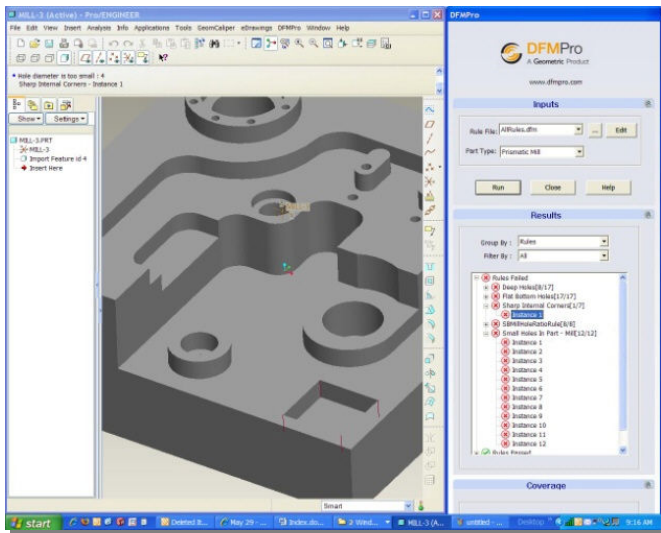
DFMPro Examples



TURNING

DFM identified several part features with small corner radiuses that will require addition operations.

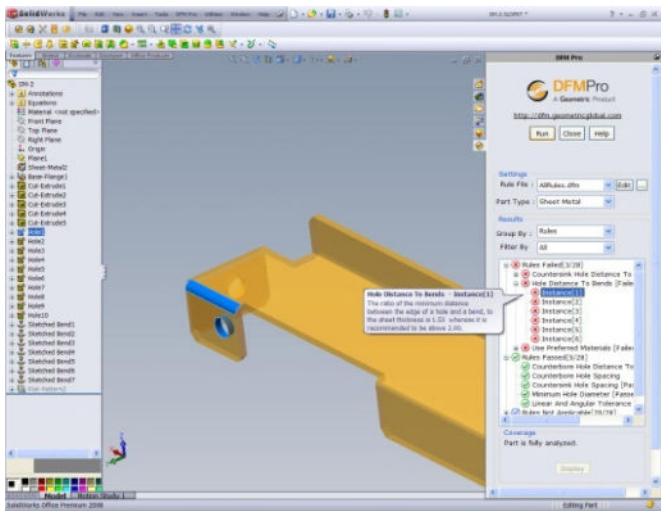
Out of the Box Standard Turning rules for checking manufacturing feasibility: Blind Hole Relief, Keyways should have end radii, Long - Slender Turned Parts, Minimum Internal Corner Radius, OD Profile Relief, and more ...



MACHINING CENTER

On this operation, DFM identified holes with internal sharp corners that will be difficult to machine.

Out of the Box Machining Center Rules, Deep - Narrow Slots, Deep Radiused Corners, Fillets on Top Edges, Narrow Regions in Pockets, Non Uniform Draft Features, Pockets with Bottom Chamfers, Sharp Internal Corners, Tool Accessibility and more ...



SHEET METAL

On this part, DFM identified that the specified bend of a corner radius is too small, for the material thickness.

Out of the Box Sheet Metal Rules: Hole Distance to Bends, Minimum Hole Diameter, Multiple Bends in Same Direction, Counterbore Hole Distance to Part Edge, Counterbore Hole Spacing, Counterbore Hole to Bend Distance, Countersink Hole Distance to Part Edge, Distance Rolled Hem Parameters and more ...